



99-04 F250 Rear Dual Shock Kit for 6-8" lifts

Thank you for choosing Rough Country for your suspension needs.

Please read instructions before beginning installation. Check the kit hardware against the Kit Contents on this page and the product layout on the last page. Be sure you have all needed parts and know where they go. Also please review tools needed list and make sure you have needed tools.

If questions exist please call Rough Country @ 1-800-222-7023 we will be happy to answer any questions concerning the design, function, and correct use of our products.

Kit Contents

2-Upper Shock Mounts
2-Lower Shock Mounts
1-Kit Bag including
8-7/16" x 1/4" bolts
8-7/16" Lock Nuts
16-7/16" Washers
4-12mm x 150mm bolts
4- 12mm washers
4- 12mm flange lock nuts
4-658461 Rough Country shocks

Tools Needed:

5/8" Socket
19mm Socket
18mm Wrench
15mm Socket
Hand grinder
Center punch

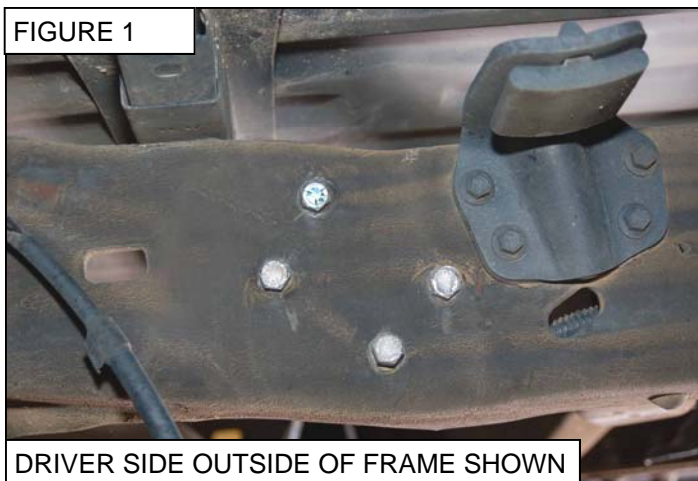
Torque Specs

Size	Grade 5	Grade 8
5/16"	15 ft/lbs	20 ft/lbs
3/8"	30 ft/lbs	35 ft/lbs
7/16"	45 ft/lbs	60 ft/lbs
1/2"	65 ft/lbs	90 ft/lbs
9/16"	95 ft/lbs	130 ft/lbs
5/8"	135 ft/lbs	175 ft/lbs
3/4"	185 ft/lbs	280 ft/lbs

INSTALLATION INSTRUCTIONS

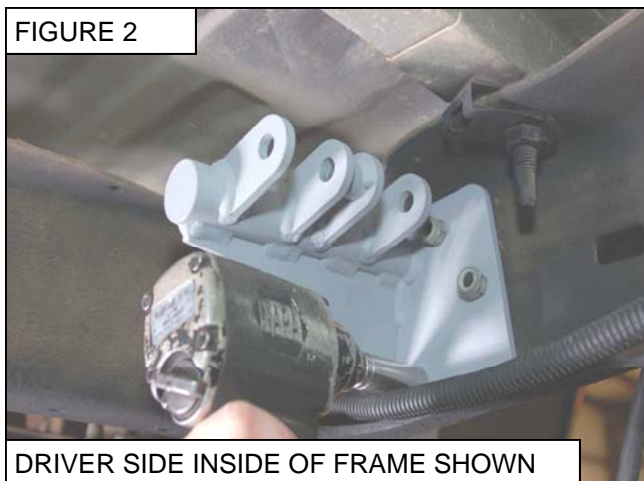
1. Locate and remove the 4 rivets that secure the stock upper shock mount to the frame rail by grinding the head off of the rivets and knock out using a center punch. Location is shown in **Figure 1**.
2. Locate the New Rough Country upper shock mount and install using the supplied 7/16" x 1 1/4" bolts and secure with flat washers and nuts as shown in **Figure 1 / Figure 2** and tighten to 45 ft/lbs. Do not over-tighten.
3. Repeat for opposite side.

FIGURE 1



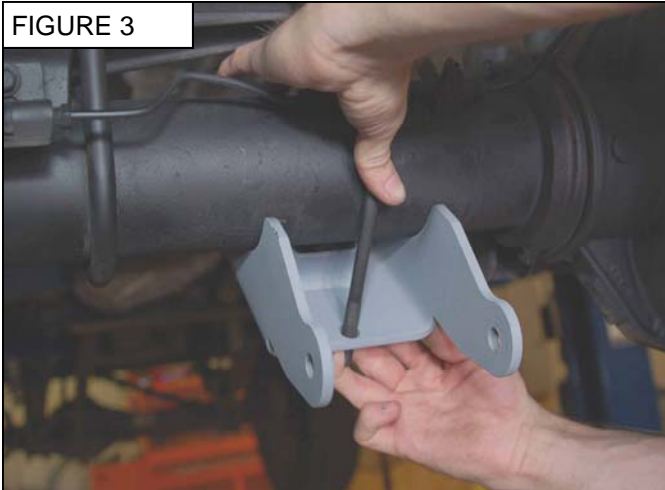
DRIVER SIDE OUTSIDE OF FRAME SHOWN

FIGURE 2



DRIVER SIDE INSIDE OF FRAME SHOWN

4. Remove the lower stock shock mount and retain the lower mount u-bolt for reuse.
5. Locate and install the new lower shock mount as shown in **Figure 3 / Figure 4** with the factory u-bolt. Square tube on bracket is placed over pin on axle. Do not tighten at this time.



6. Locate and install the supplied bushings / sleeves in the new Rough Country shock absorbers.
7. Install the shock absorbers in the new upper mount as shown in **Figure 5** with the supplied M12 x 150MM bolts, washers and flange lock nuts. Do not tighten at this time.
8. Install the lower shocks on the axle mount as shown in **Figure 6** with the supplied washers, spacer (1 per mount) and M12 x 150MM bolts.



9. The new lower dual bracket will allow to “fine tune” the shocks on the axle tube. Check to make sure shocks are properly spaced on axle and the shocks are perpendicular to ground. Tighten upper and lower mounts to 40 ft/lbs.

