**WARNING:**

Do not inflate this assembly when it is unrestricted. The assembly must be restricted by the suspension or other adequate structure. Do not inflate beyond 100 P.S.I. Improper use or over inflation may cause property damage or severe personal injury.

Installation of this kit requires a minimum of 6-1/2" of clearance between the tire side wall and the frame.

INSTALLATION INSTRUCTIONS

Congratulations - your new Air Helper Springs are quality products capable of improving the handling and comfort of your vehicle. As with all products, proper installation is the key to obtaining all of the benefits your kit is capable of delivering. Please take a few minutes to read through the instructions to identify the components and learn where and how they are used. It is a good idea to start by comparing the parts in your kit with the parts list below.

The heart of the air helper spring kit is, of course, the air springs. Remember that the air helper springs must flex and expand during operation, so be sure that there is enough clearance to do so without rubbing against any other part of the vehicle.

Be sure to take all applicable safety precautions during the installation of the kit. The instructions listed in this brochure and the illustrations all show the left, or driver's side of the vehicle. To install the right side assembly simply follow the same procedures.

Your kit includes separate inflation valves and air lines for each air helper spring. This will allow you to level your vehicle from side to side as well as from front to back. If you would rather have a single valve inflation system, your dealer can supply the required "T" fitting.

IMPORTANT!

For your safety and to prevent possible damage to your vehicle, do not exceed the maximum load recommended by the vehicle manufacturer (GVWR). Although your Air Helper Springs are rated at a maximum inflation pressure of 100 P.S.I., this pressure may allow you to carry too great a load on some vehicles. Check your vehicle owner's manual for maximum loads listed for your vehicle.

When inflating your Air Helper Springs, add air pressure in small quantities, checking pressure frequently during inflation. The air spring requires much less air volume than a tire and, therefore, inflates much quicker.

PARTS LIST

AIR SPRING	9000	2	5/16" FLAT WASHER	4
UPPER BRACKET	5202	2	AIR LINE TUBING	1
LOWER BRACKET	5092	2	VALVE CAP	2
BRACKET STRAP/SHIM 1/2"	5086	4	INFLATION VALVE	2
3/8"-16 x 4-1/2" CARRIAGE BOLT		8	ELBOW FITTING	2
3/8"-16 X 3/4" FLANGE BOLT		6	THERMAL SLEEVE	2
3/8"-16 X 4" HEX BOLT		8	NYLON TIE	6
3/8"-16 FLANGE LOCK NUT		16	CAUTION TAG	2
3/8" SPECIAL WASHER		8		

NOTE: Both illustrations are of the left, or drivers side, of the vehicle. Reverse any orientations when assembling and installing the right, or passenger, side of the vehicle.

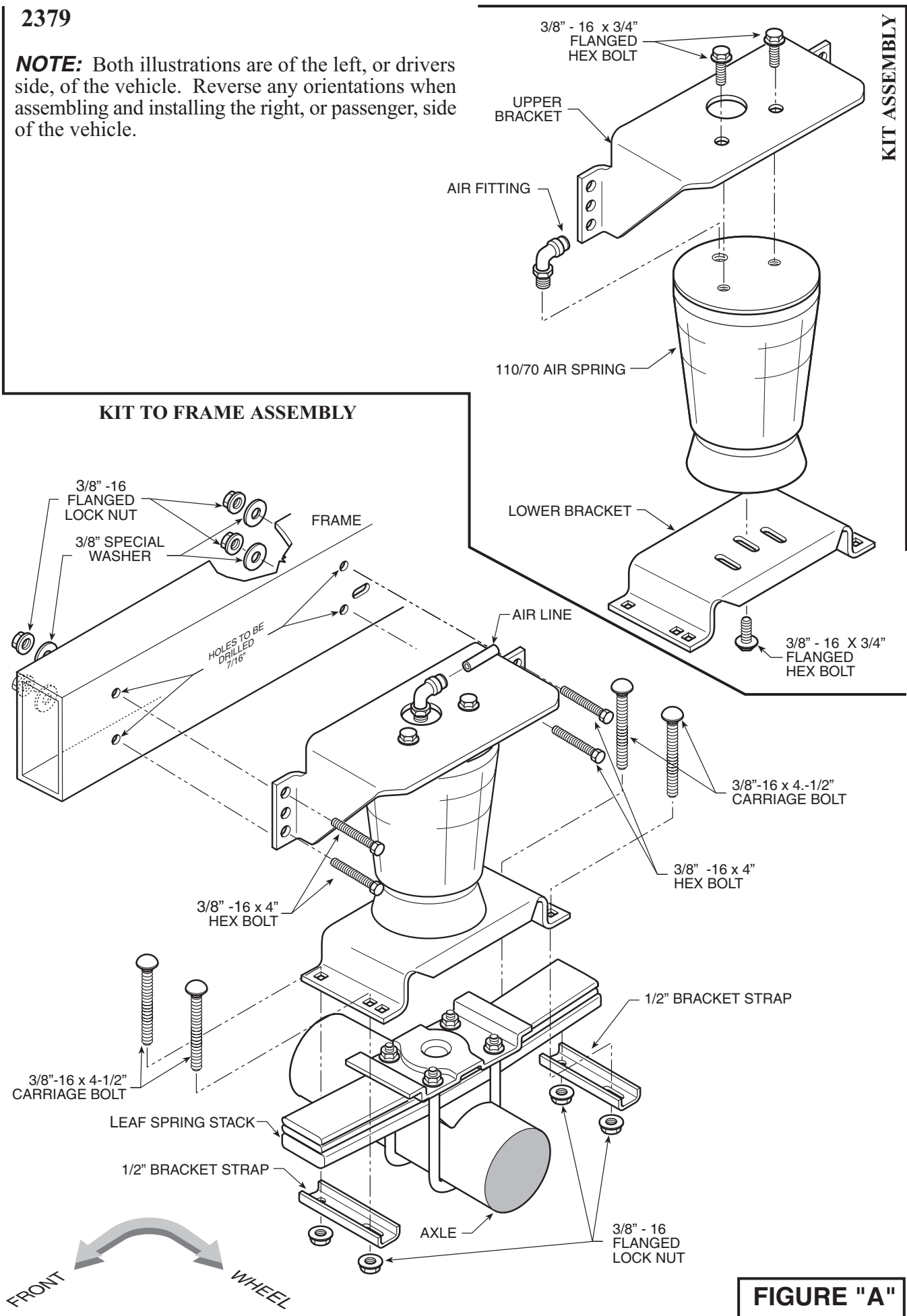


FIGURE "A"

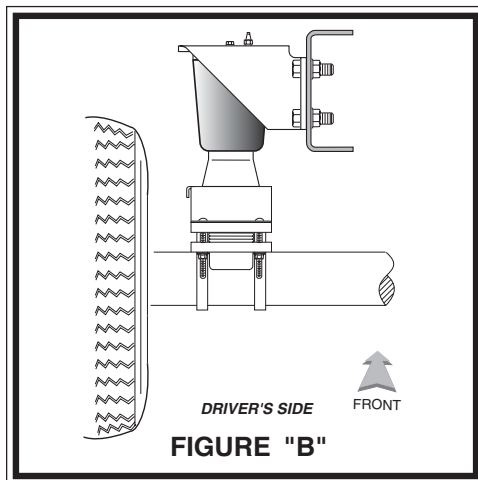


FIGURE "B"

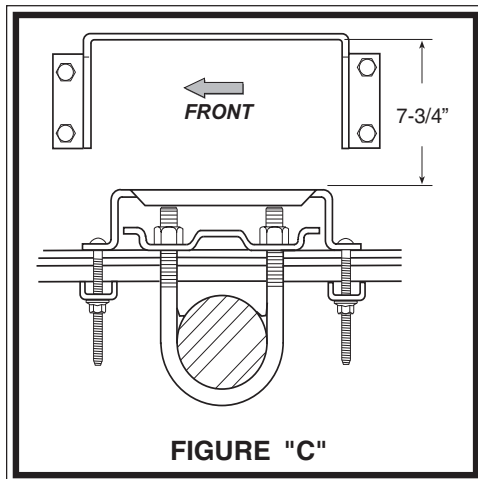


FIGURE "C"

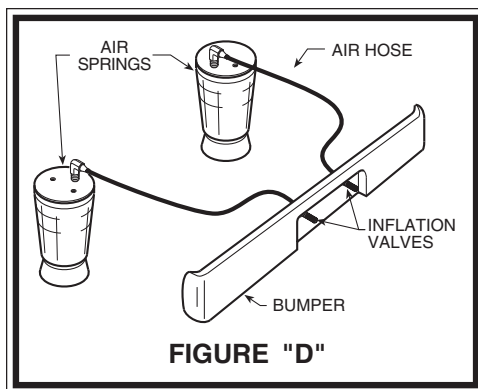


FIGURE "D"

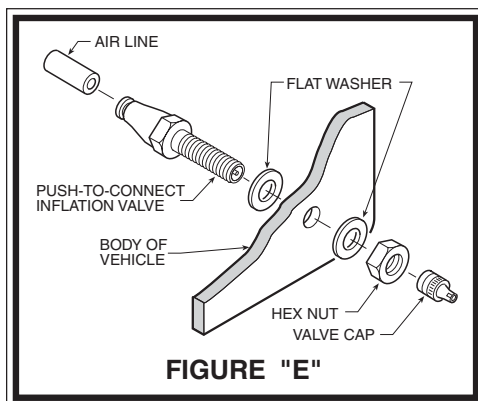


FIGURE "E"

STEP 1 - PREPARE THE VEHICLE

Remove the negative battery cable. With the vehicle on a solid, level surface chock the front wheels. Raise the vehicle by the axle and remove the rear wheels. After the removal of the wheels lower the vehicle so the axle rests on jack stands rated for your vehicles weight.

STEP 2 - PRE-ASSEMBLE THE KIT

Select one air helper spring and an upper bracket from your kit. Before attaching the air spring to the upper bracket, thread the air fitting into the spring *see Figure "A"*. Tighten the air fitting so as to make contact with the nylon ring and then tighten 1/4 turn to snug the fitting. No thread sealant is needed. Align the threaded mounting holes of the air spring with the mounting holes of the upper bracket and attach the upper bracket using the 3/8" - 16 x 3/4" flanged hex bolts. Select one lower bracket and place the bracket so the lip of the lower bracket will be next to the tire *see Figure "A"*. Fasten using a 3/8" - 16 x 3/4" flange lock bolt through the center slot into the threaded hole in the air spring (*finger tight*). **Note that this bolt will be tightened in Step 4.**

STEP 3 - PRE-FIT AND MARK / DRILL HOLES

Position the air spring assembly on the leaf spring stack. The lower bracket should straddle the leaf spring retainer and the upper bracket mounting flanges should be flush against the frame.

Before marking and drilling the holes for the upper bracket, make sure the mounted height of the air spring is 7-3/4" *see Figure "D"*, and the upper and lower brackets are as parallel as possible. Mark the four holes to be drilled with a center punch using the upper bracket as a template, then remove the air spring assembly. **Before drilling the holes make sure all electrical, brake and fuel lines are cleared from the path of the drill.** Damage to lines can be avoided by inserting a piece of wood between the frame rail and any lines in the path of the drill. Drill the four holes in the frame rail using a 7/16" drill bit *see Figure "A"*.

STEP 4 - INSTALL THE ASSEMBLY TO THE VEHICLE

After drilling the holes in the frame rail place the assembled air spring and brackets back on the leaf stack making sure the lower bracket is placed over the retainer (*see Figure "A" & "C"*). Install the 3/8" - 16 x 4" hex bolts through the upper bracket holes and the holes that were drilled in the frame rail. Next, fasten the upper bracket to the frame rail using the 3/8" - 16 flange lock nuts and flat washers *see Figure "A"*. On each side of the vehicle, substitute a standard washer in place of the special washer in the upper rear location *see Figure "A"*. Next, attach the lower bracket to the leaf spring assembly. Use the bracket strap/shim fasten the air spring assembly to the leaf stack using the 3/8" - 16 x 4-1/2" carriage bolts and 3/8" - 16 flanged lock nuts *see Figure "A"*. **Tighten the air spring to the lower bracket making sure the air spring is as vertical as possible.**

STEP 5 - INSTALLATION OF THE PASSENGER'S SIDE ASSEMBLY

Reverse any orientations when assembling and installing the right, or passenger side of the vehicle.

STEP 6 - INSTALL THE AIR LINE AND THE INFLATION VALVE

Uncoil the air line tubing and cut it into two equal lengths. *DO NOT FOLD OR KINK THE TUBING.* Try to make the cut as square as possible. Insert one end of the tubing into the elbow fitting installed in the top of the air helper spring. Push the tubing into the fitting as far as possible *see Figure "A"*.

Select a location on the vehicle for the air inflation valves. The location can be on the bumper or the body of the vehicle, as long as it is in a protected location so the valve will not be damaged, but maintain accessibility for the air chuck *see Figure "E"*. Drill a 5/16" hole and install the air inflation valve using two 5/16" flat washers per valve as supports *see Figure "F"*. Run the tubing from the air helper spring to the inflation valve, routing it to avoid direct heat from the engine, exhaust pipe, and away from sharp edges. Thermal sleeves have been provided for these conditions. If a thermal sleeve is required simply slide the sleeve over the air line tubing to the location requiring protection. The air line tubing should not be bent or curved sharply as it may buckle. Secure the tubing in place with the nylon ties provided. Push the end of the air line tubing into the inflation valve as illustrated *see Figure "F"*.

STEP 7 - CHECK THE AIR SYSTEM

Once the inflation valves are installed inflate the air helper springs to 70 P.S.I. and check the fittings for air leaks with an applied solution of soap and water. If a leak is detected at a tubing connection then check to make sure that the tube is cut as square as possible and that it is pushed completely into the fitting. The tubing can easily be removed from the fittings by first releasing the air pressure then push the collar towards the body of the fitting and then pulling out the tube. If a leak is detected where the fitting screws into the spring, remove the tubing by pushing the collar towards the body of the fitting and then pulling out the tube, then screw the brass fitting into the air spring or until the leak stops. Re-install the tubing and reinflate the air springs and check for leaks as noted above.

This now completes the installation. Install the wheels and torque the lug nuts to the manufactures specifications. Raise the vehicle by the rear axle and remove the jack stands and lower the vehicle back onto the ground. Re-attach the negative battery cable and remove the wheel chocks from the wheels. Before proceeding, check once again to be sure you have proper clearance around the air springs. With a load on your vehicle and the air helper springs inflated, you must have at least 1/2" clearance around the air springs. As a general rule, the air helper springs will support approximately 25 lbs. of load for each P.S.I. of inflation pressure (per pair). For example, 50 P.S.I. of inflation pressure will support a load of 1250 lbs. per pair of air helper springs. *FOR BEST RIDE* use only enough air pressure in the air helper springs to level the vehicle when viewed from the side (front to rear). This amount will vary depending on the load, location of load, condition of existing suspension and personal preference.

NOTE:

Too much air pressure in the air helper springs will result in a firmer ride, while too little air pressure will allow the air helper spring to bottom out over rough conditions. Too little air pressure will also not provide the improvement in handling that is possible. *TO PREVENT POSSIBLE DAMAGE MAINTAIN A MINIMUM OF 10 P.S.I. IN THE AIR HELPER SPRINGS AT ALL TIMES.*

NOTE:

Once the air helper springs are installed, it is recommended that the vehicle not be lifted by the frame, as over-extension may occur, resulting in damage to the air helper springs. However, should it become necessary to raise the vehicle by the frame, deflate both air helper springs completely.

NOTE:

MIN PRESSURE 5 PSI

MAX PRESSURE (LOADED) 100 PSI



www.riderite.com